

# SE Massachusetts Mineral Club



## OutCroppings

**June 2023**

Incorporated April 8, 1970

**Meetings held on the second Thursday of each month at 7:30pm  
(excluding July and August)**

**Meetings are held at the Rockland Eagles Hall  
29 Park Street, Rockland, MA 02370**

**Next Meeting June 8, 2023**

**President:** Walter Schell

**Vice President:** Sara Ostrander

**Secretary:** Melissa Claire Prario

**Treasurer:** Dr. Robert Chasen

**Newsletter Editor: Larry Ryan**  
[zone859@verizon.net](mailto:zone859@verizon.net)



**Come digging with us!**

### **A Message from the Editor**

#### **Greetings!**

Recently I have people that are not getting notifications. If you are one of them then SEND ME an Email that will show me your true Email address and I can check it on my list. [zone859@verizon.net](mailto:zone859@verizon.net)

*Larry*

**[SEMMC Facebook Page](#)**

**[SEMMC Website](#)**

**Election of Club Leadership. Vote to be taken at the June 8, 2023 Meeting! Let your voice be heard!**



**We have our Coprolite together!**



## Up Coming Digs

Spring is here and collecting season has started. Keep up with Club news about upcoming digs! If you wish to add a site let someone know and we can set it up.

**Members can sign up for digs on our website** and reminders and directions are sent to you! If you have issues go to our Face Book page. You can find someone to help you out.

**June 3**

**Hewetts Quarry  
See Alynne!**

### **Digs we have gone on already in 2023**

**May 7**

**[Keating Quarry, Lunenburg, MA](#) Trip Video!**

**Thank You Suzanne Wall and Sara Ostrander Trip Coordinators!**

**May 20**

**[Tripp and Clark Mine](#), Alstead, NH Video**

**Thank You Dan and Mary!**

**Make sure to ask what safety equipment you will need to have. Get all the details! Safety is our top concern. Know what to expect, and what is expected from you.**

**The Club picks up about 50% of the cost of the digs. Actual amounts, for any trip can be found out when you book the dig as prices per site vary. Some sites allow power tools, some do not. Most sites can be dangerous due to loose rock, pits, cliffs, and water hazards. Be**

prepared! Do not disturb any wildlife you come across as spring and summer are young rearing time.

\*\*\*\*\*

**Field collecting trips to private quarries and mines are open to SEMMC members only, as our insurance policy covers members only. Please bring your SEMMC Membership card with you.**  
**On public land or beaches, ALL are welcome.**

All participants of field trips are required to contact trip leaders at least 48 hours in advance of trip date.

*Schedules may change. Please contact the host to confirm date, time and details.*

Some trips may be eliminated, added, or altered depending on weather and other circumstances. Keep in touch with our **Facebook Page** to get the sudden additions to the digging schedule!



Free polished Stones Thanks to SEMMC!



*Mike O'Laughlin*

\*\*\*\*\*

## Club Diggings 2023

The Club scored great specimens on the many trips we took this year!

There is a Club outing for everyone. Come on out and join in!

Tripp and Clark Mine, Hewitt's Mine, Moat Mountain, Emma's Fossil Pit, Keatings Quarry, Mt. Mica, **HERKIMERS, our own Claim!** The list grows longer and longer every year. Can any new members put us on some new spots?

Info about all the dig sites can be found at the meetings, so please join us. Anyone wanting **info on our Herkimer Claim should contact Martin Gilar, Walter Schell, or Diamond Bob.** Know what to expect, and what is expected of you, along with where all the Club's tools ect... can be found.

**Meetings held on the second Thursday of each month at 7:30pm  
(excluding July and August)**

**Meetings are held at the Rockland Eagles Hall  
29 Park Street, Rockland, MA 02370**

\*\*\*\*\*

## **Other Mineral Shows!**

I am hoping anyone who knows of a Mineral Show will send me the info so I may publish it here!

[Mineral Shows Across USA](#)

---

## **Education, the shortcut to better rock and mineral collecting!**

There is no better way to improve your collecting! Knowing the minerals you are seeking, where to collect them, and recognizing what you have, is so important to the collector. We have a number of “Experts” more than willing to help you in your quest for collectables. Club meetings are the place to start. Plenty of free specimens from members to be had, along with the raffle, where more great “stuff” can be had if you get lucky!

[YouTube!](#)

**A wealth of knowledge at your fingertips!**

You want to know where to go? What to find, and where to find it?

Go to Youtube, type in your search and learn from those in the field.

[Michigan Rocks](#)

Collecting and Polishing various “beachStones” around the Great Lakes

[Montana Rock Mom](#)

Searching the west!

**When traveling around the country**

**And you want a place to prospect,**

**Go to**

[www.mindat.org](http://www.mindat.org)

Other sites to visit!

[Google Earth](#) [Geology.com](#)

[Fluorescent Mineral Society](#)

\*\*\*\*\*

# Member's Corner

Welcome New Members!

Shirts are in!



So your choices are...

**SMALL - pink with black ink OR orange with black ink**

**MEDIUM - pink/black OR blue/white;**

**LARGE - pink/black OR blue/black**

**X LARGE - pink/black OR blue/white**

**XX LARGE - blue/white**

---

**Officers and E Board 2023**



**President**

Walter Schell

**Vice President**

Sara Ostrander

**Secretary**

Melissa Claire Prario

**Treasurer**

Dr. Robert Chasen

**Asst. Treasurer**

Larry Ryan

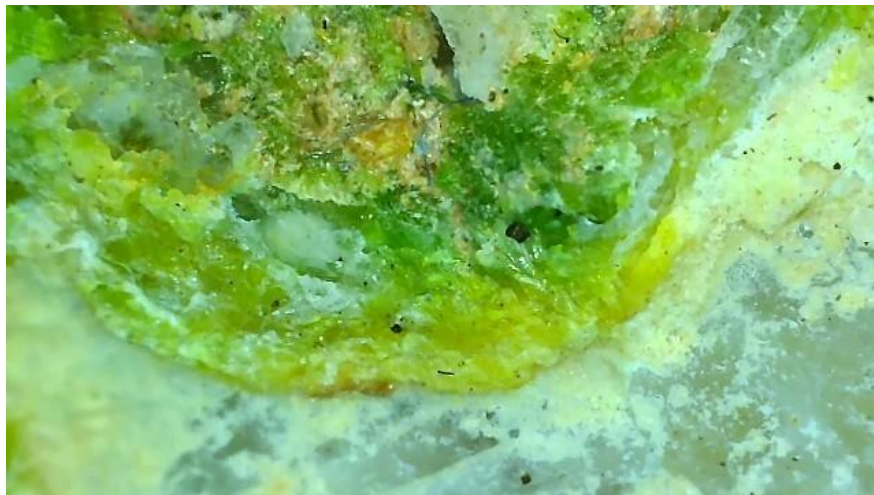
**E Board**

Dan Ryan      Ania Dobrolinska

Tom Carter    Alynne MacLean

Steve Kimball    Suzanne Wall

\*\*\*\*\*



**Southeastern Massachusetts Mineral Club**



**Memberships are Due in August!**

**\$20.00 per Family per year Dues**

**\$15.00 per Single Person**

And for that money, you are a fully insured Club Member, access to a wealth of mineral knowledge, Club digs, are held at some of the best quarries in New England, 10 scheduled Meetings per Year, September to June where knowledge and information are exchanged freely. New members learn the What, Where, How and When. Come to the next meeting and see.

**Come Join Us and find out!**

**Scouting for new spots**

We are always looking for new areas to collect from. If you are sitting at home with nothing to do, log on and find out about the history of mining in your area. Many old and abandon quarries and mines still

exist throughout our region. Take a look and see what you can find. Send me any info you have and I will publish it so all Club Members will know.

Larry

### **Membership Form**

Dues are as follows:

**-Individual Membership \$15.00 Yearly Dues with e-mail newsletter-**

**-Family Membership \* \$20.00 Yearly Dues with e-mail newsletter-**

**\* Family Membership must list all family members as of September 1 of the membership year.**

**Return with your payment made out to SEMMC, Inc.**

**Date** \_\_\_\_\_

**Name(s)** \_\_\_\_\_

**Children** \_\_\_\_\_  
\_\_\_\_\_

**Address** \_\_\_\_\_

**City** \_\_\_\_\_ **State** \_\_\_\_\_

**Zip code** \_\_\_\_\_

**Phone(s)** \_\_\_\_\_

**Email address** \_\_\_\_\_

**Southeastern Massachusetts Mineral Club**

**PO Box 228**

**E Bridgewater MA 02333-0228**

