

SE Massachusetts Mineral Club



Long Time Members still Active!



**Diamond Bob, Kurt Stevens and Suzanne Wall
Ask us about our experiences.**

OutCroppings

November, 2021

www.semmc.com

Incorporated April 8, 1970

**Meetings held on the second Thursday of each month at 7:30pm
(excluding July and August)**

**Meetings are held at the Rockland Eagles Hall
29 Park Street, Rockland, MA 02370**

Next Meeting November 11, 2021
December Meeting Dec.09,2021

President: Walter Schell wshell1191@gmail.com

Vice President: Steve Kimbal steve@kimbalpainting.com

Secretary: Sara Ostrander naturespeaks2you@gmail.com

Treasurer: Dr. Robert Chasen drchasen@comcast.net

Newsletter Editor: Larry Ryan zone859@verizon.net



A Message from President Walter Schell

A Message from the EBoard

A Message from the Editor

Greetings, I hope you are still getting out and collecting. I am finally starting to get the newsletter in proper condition and hope that you all are enjoying the content. I am always ready to accept any stories, pictures, suggestions for articles, favorite minerals, ect... Join in, get to know other club members, learn from each outing and pass it on to your family and friends. We had a dig at Tripp and Clark Quarry in New Hampshire and 20 people signed up to go. Check out the story later in this issue. Hope to see more of our Club Members at the digs!

Larry

[SEMMC Facebook Page](#)

Keep in touch with our Facebook Page to get the sudden additions to the digging schedule!

Field Trip Agenda

Field collecting trips are open to SEMMC members only, as our insurance policy covers members only. Please bring your SEMMC Membership card with you.

All participants of field trips are required to contact trip leaders at least 48 hours in advance of trip date.

Schedules may change. Please contact the host to confirm date, time and details.

Some trips may be eliminated, added, or altered depending on weather and other circumstances.

However, please remember we do have a club claim in Fonda, NY and it is open year-round, weather permitting.

As the collecting season proceeds please keep an eye out for up coming field trips. As always, we care about your safety first so with that being said; ENJOY!

Mineral of the Month Morganite



Gemstone

Morganite is a orange or pink gemstone and is also a variety of beryl. Morganite can be mined in countries like Brazil, Afghanistan, Mozambique, Namibia, the United States, and Madagascar. Morganite has grown in popularity since 2010 and has become a popular alternative to the diamond. Wikipedia

Color: Pink, Purple

Luster: Vitreous

Crystal system: Hexagonal crystal system

Chemical formula: $\text{Be}_3\text{Al}_2\text{SiO}_6$

Hardness (Mohs hardness scale): 7.5 – 8

Mineral class: Beryl

Transparency: Translucent, Transparent

[Morganite, Wikipedia](#)





Specimens from Hewitts, Quarry 2021

Mica

There are several varieties of mica, but the three primary varieties are, muscovite, a hydrated silicate of aluminum and potassium; phlogopite, which is a magnesium bearing mica; and biotite, a ferro-magnesium variety. See complete story below.



You can find in pegmatite along with other minerals.



Or in thick sheets.



They all are beautiful in the sunlight

University of Waterloo

[Earth Sciences Museum](#)

Geology in Action

Recent volcano eruptions strike the Canary Island of LaPalma!

Many earthquakes started shaking the area around the Cumbre Vieja volcano on the Island of LaPalma in the Canary Islands around September 19th. Island Officials fearing an eminent eruption began evacuating people living and working in the area. The side of the mountain split open and magma, smoke and ash roared out of the earth. As of October 7th over 1000 homes and businesses have been destroyed by lava flows and falling ash. There have been no casualties as of this writing. Residents in surrounding towns and villages have needed to wear masks and eye protection to stop the inhalation of the dust and gases. Live videos on **Youtube.com** show magma being

shot 1000s of feet in the air. This forms a cinder cone around the vent. However, there are multiply vents in a row and often the sides of the cones collapse sending “rocks” the size of 5 story buildings rolling down the sides. The constant explosions sound like a WW2 bombing run that never quits. The Spanish Government has vowed to help the residents who have lost their homes and businesses to rebuild.

Hawaii’s Kilauea Volcano erupts back to life!

Recent activity in main crater signals the start of another eruption. Magma has started filling up the main crater of the volcano and fountains shooting into the air has volcano experts on alert. Constant monitoring is being conducted 24 hours a day. At this time there is no danger to any residents living outside the park.

Iceland’s Fagradalsfjall Volcano slows way down while fears of a new eruption loom!

The Fagradalsfjall volcano began erupting in March of this year after 1000s of earth quakes shook the area. Magma began shooting out of a crack that opened up in the earth. As many as 8 vents opened in the first few days, then one of the central vents took over and now is one of the highest mountains in the area. Lava flows have yet to threaten any residents in the area as the lava flows have deep valleys to flow into. Residents and tourists can get up close and personal with this volcano as it emits only hot gases without heavy smoke and ash. Lava flows are the biggest threat. Many videos can be found on Youtube.com. While this volcano’s eruptions have slowed down, it is still considered active. Recently swarms of earthquakes have been centered around an extinct volcano named Mt. Keiler about 7 kilometers NNE of the current volcano and Iceland scientists fear a new eruption there could threaten the City of Reykjavik and the only road to the international airport. The mid Atlantic Ridge, where the North American tectonic plate and the

European plate are pulling apart is allowing magma to push it's way out to the surface.

When traveling around the country

And you want a place to prospect,

Go to

www.mindat.org

Glaciers

Glaciers are on the retreat world wide. Many are found deep in the mountains, but some can be approached. When the glacier recedes it drops what it had been digging up all along it's path. Fossil corals found in Lake Michigan were left when the ice age ended.



We leave rocks and minerals behind as we recede!

Member's Corner

Welcome New Members!



Don't feel all alone! Join in!
Shirts are in!



So your choices are...

SMALL - pink with black ink OR orange with black ink

MEDIUM - pink/black OR blue/white;

LARGE - pink/black OR blue/black

X LARGE - pink/black OR blue/white

XX LARGE - blue/white



The **October Meeting** was a good time. There were plenty of raffle prizes and sharing of pieces from member's summer digs! Diamond Bob had plenty of specimens from the Club's Site in New York to share with the members present.



Club President Walter Schell had a lot to say about the Club and what our goals are. The EBoard was there and we all discussed, "Where are we going next?" Plans were started on where the next dig will be and there were a couple goods ones discussed. Keep in touch with our Facebook Page as digs are often planned at the last minute. Also anyone can be a trip leader! Lead us to a new "secret" spot!

[SEMMC FACEBOOK PAGE](#)





Suzanne teaching the finer points of MOHS testing to Martin.

The December Meeting to be held December 9, 2021

Best of the Best!

Got a good picture of your best Find?



Show us what you found here!



So many to choose from!



**Tripp and Clark Quarry
Alstead, New Hampshire**

Great spot to take rose quartz and some nice beryls. We had one trip there already and now the Clark Quarry, a new area has opened up and we were some of the first people to search it in a while.



A rose is a rose is a rose.....



Some of the nice specimens from the first trip!

[Tripp Mine Video](#)



Second Tripp & Clark Mine Outting Successful!

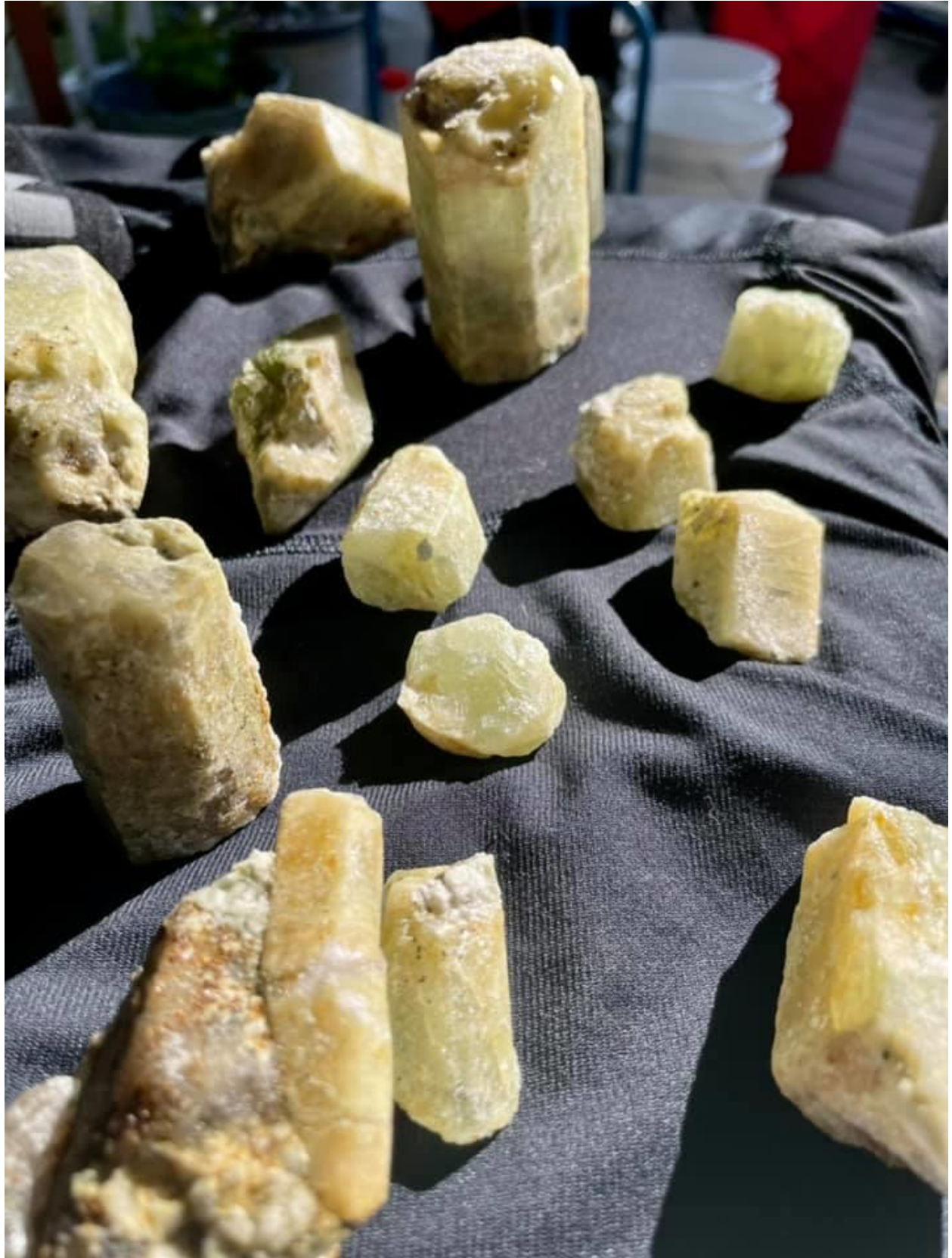


What a great day! Everyone picked up beryls. There were garnets, black tourmalines, rose quartz and other gems and stones to gather. Suzanne spent the day at the Clark Mine. We are awaiting her finds. There are many places to find what you are looking for here.





Dan Ryan hit the “Mother Lode!” One large rock yielded many fine beryls.







Hi, it's me Beryl, I mean Daryl!
I had one of **MY BEST OUTTINGS!**



Members digging with mom or pop or both!



Most of the crew!

Southeastern Massachusetts Mineral Club



Memberships run from August 1st to July 31

\$20.00 per Family per year Dues

And for that money, you are a fully insured Club Member, access to a wealth of mineral knowledge, Club digs, are held at some of the best quarries in New England, 10 scheduled Meetings per Year, September to June where knowledge and information are exchanged freely. New members learn the What, Where, How and When. Come to the next meeting and see.

“Hey, someone gave me these “Rocks”

What are they?



Come Join Us and find out!

Scouting for new spots

We are always looking for new areas to collect from. If you are sitting at home with nothing to do, log on and find out about the history of mining in your area. Many old and abandon quarries and mines still exist throughout our region. Also there are many “ancient” sites that hold evidence of the indigenous peoples that were living here and quite possibly Viking Settlements that were here before Columbus in 1492. Take a look and see what you can find. Send me any info you have and I will publish it so all Club Members will know.

Larry

[America's Stonehenge](#)



Happy Thanksgiving to All!

Membership Form

Your dues help keep us going. Dues pay for the newsletter, correspondence, refreshments, speakers, and a host of other expenses. Dues are as follows:

-Individual Membership \$15.00 Yearly Dues with e-mail newsletter-

-Family Membership * \$20.00 Yearly Dues with e-mail newsletter-

*** Family Membership must list all family members as of September 1 of the membership year.**

Tear off and return with your payment made out to SEMMC, Inc.

Date _____

Name(s) _____

Children _____

Address _____

City _____ State _____

Zip code _____

Phone(s) _____

Email address _____

Southeastern Massachusetts Mineral Club

PO Box 228

E Bridgewater MA 02333-0419

