

# SE Massachusetts Mineral Club



## OutCroppings

**April 2023**

Incorporated April 8, 1970

**Meetings held on the second Thursday of each month at 7:30pm  
(excluding July and August)**

**Meetings are held at the Rockland Eagles Hall  
29 Park Street, Rockland, MA 02370**

**Next Meeting April 13, 2023**

**President:** Walter Schell [wshell1191@gmail.com](mailto:wshell1191@gmail.com)

**Vice President:** Sara Ostrander [naturespeaks2you@gmail.com](mailto:naturespeaks2you@gmail.com)

**Secretary:** Melissa Claire Prario [mcprario@gmail.com](mailto:mcprario@gmail.com)

**Treasurer:** Dr. Robert Chasen [drchasen@comcast.net](mailto:drchasen@comcast.net)

**Newsletter Editor:** Larry Ryan [zone859@verizon.net](mailto:zone859@verizon.net)



**Come digging with us!**

### **A Message from the Editor**

#### **Greetings!**

Thank you to all the members for making our Auction a grand success! Good crowd, Great auctioneer, Great Club! We gained a lot of new members and made more revenue than all previous auctions. We can be happy and proud of our accomplishment!

All right let's get digging!

Larry

**[SEMMC Facebook Page](#)**

**[SEMMC Website](#)**



**Smiles all around April 1<sup>st</sup>.**

## **Up Coming Digs**

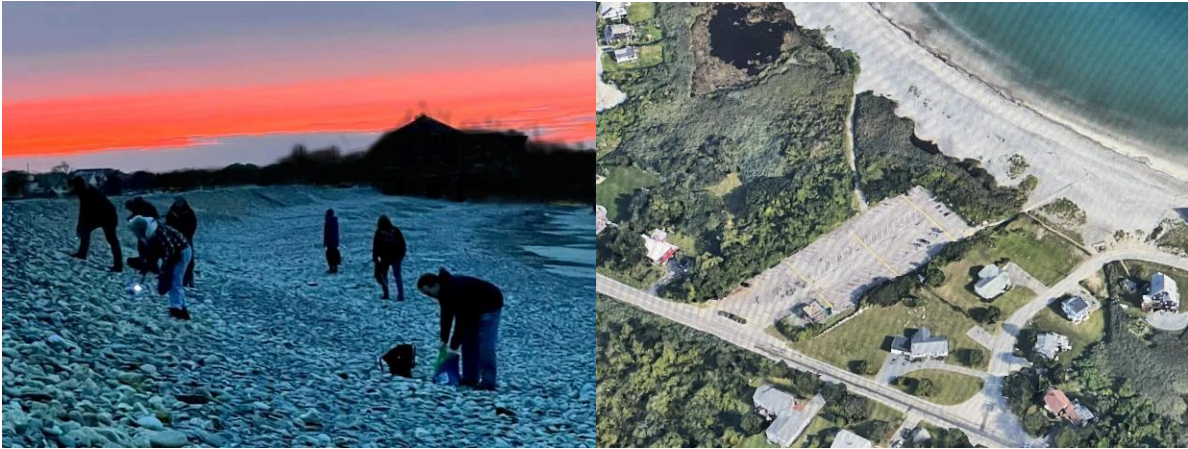
Spring is here and collecting season has started. Keep up with Club news about upcoming digs! If you wish to add a site let someone know and we can set it up.

### **Trip #1**

**April 21<sup>st</sup>**

This is a night trip for collecting fluorescent stones at a local beach. We will meet at the parking lot of **Egypt Beach, Scituate at 7:30PM**. If you have a **UV light** please bring it! Best lights for looking are the Convoy C8 found along with smaller versions @ [www.yooperlite.com](http://www.yooperlite.com) Erik Rintamaki the owner is on our Face Book page. Another light is the

“Beast” you can find it on line. Wear good shoes or boots as you will be walking on loose stone and don’t want to fall. Open to all! **See Larry Ryan for details.**



### **Trip #2**

**May 21**

### **Tripps Mine**

Tripps Mine is in New Hampshire. We have a spot nearby that we can camp in if you wish. See **Dan Ryan for details.**



**Field collecting trips are open to SEMMC members only, as our insurance policy covers members only. Please bring your SEMMC Membership card with you.**



All participants of field trips are required to contact trip leaders at least 48 hours in advance of trip date.

*Schedules may change. Please contact the host to confirm date, time and details.*

Some trips may be eliminated, added, or altered depending on weather and other circumstances. Keep in touch with our Facebook Page to get the sudden additions to the digging schedule!



\*\*\*\*\*

## Club Diggings 2022

The Club scored great specimens on the many trips we took this year! There is a Club outing for everyone. Come on out and join in!

Tripp and Clark Mine, Hewitt's Mine, Moat Mountain, Emma's Fossil Pit, Keatings Quarry, Mt. Mica, **HERKIMERS, our own Claim!** The list grows longer and longer every year. Can any new members put us on some new spots?

Info about all the dig sites can be found at the meetings, so please join us. Anyone wanting **info on our Herkimer Claim should contact Martin Gilar, Walter Schell, or Diamond Bob.** Know what to expect, and what is expected of you, along with where all the Club's tools ect... can be found.

**Meetings held on the second Thursday of each month at 7:30pm  
(excluding July and August)**

**Meetings are held at the Rockland Eagles Hall  
29 Park Street, Rockland, MA 02370**



\*\*\*\*\*

## **Other Mineral Shows!**

I am hoping anyone who knows of a Mineral Show will send me the info so I may publish it here!

[Mineral Shows Across USA](#)

---

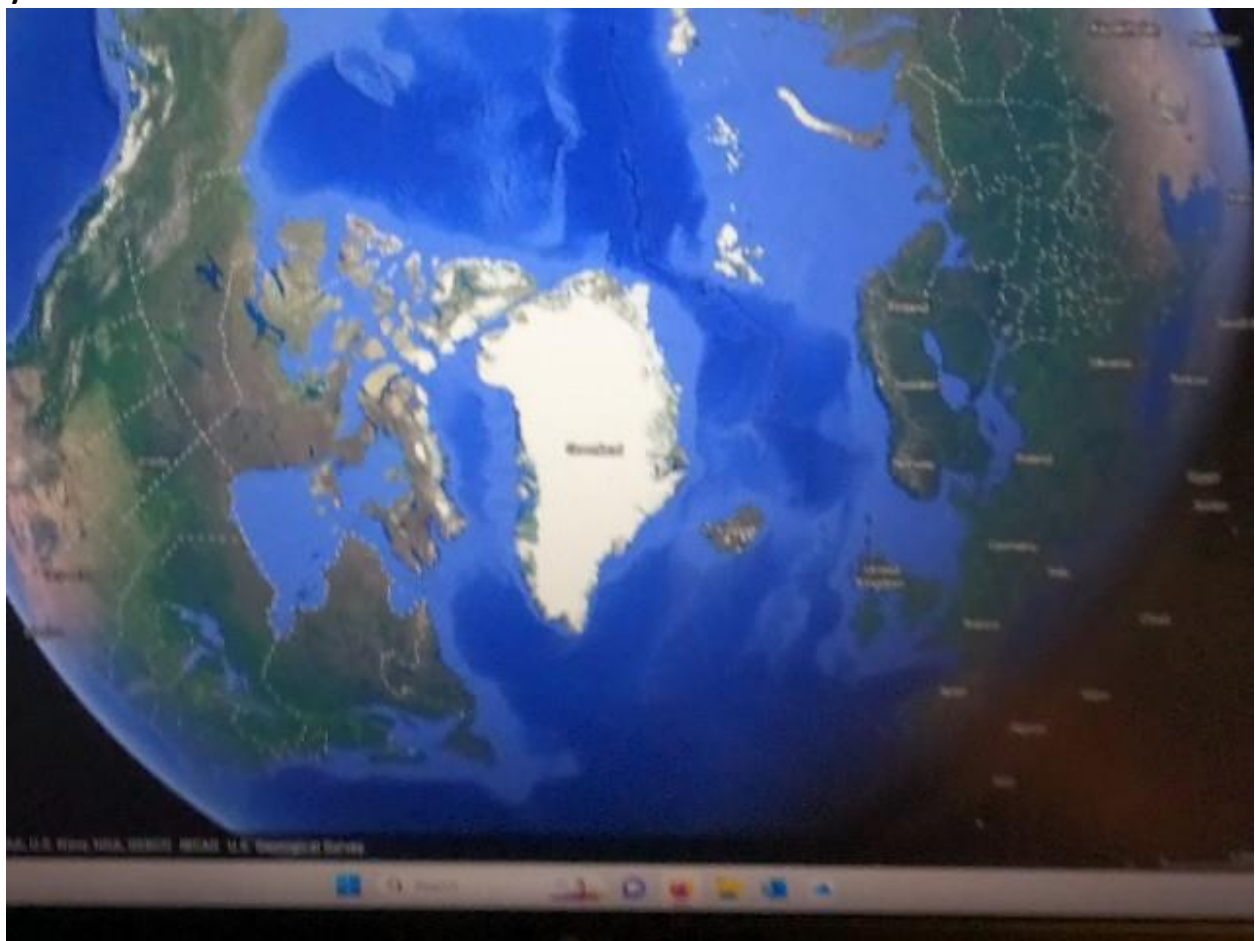
## **Education, the shortcut to better rock and mineral collecting!**

There is no better way to improve your collecting! Knowing the minerals you are seeking, where to collect them, and recognizing what you have, is so important to the collector. We have a number of

“Experts” more than willing to help you in your quest for collectables. Club meetings are the place to start. Plenty of free specimens from members to be had, along with the raffle, where more great “stuff” can be had if you get lucky!

## [Google Earth](#)

Google Earth is a relatively new view of the earth and it's oceans. People from all over the world have used it to “discover” many strange and unusual sights around the world. I use Google Earth and it is invaluable. From looking down from space, to walking down the street in front of your own house, you can do it.



When traveling around the country  
And you want a place to prospect,  
Go to  
[www.mindat.org](http://www.mindat.org)

\*\*\*\*\*

## Member's Corner

**Welcome New Members!**

**Shirts are in!**



So your choices are...

**SMALL - pink with black ink OR orange with black ink**

**MEDIUM - pink/black OR blue/white;**

**LARGE - pink/black OR blue/black**

**X LARGE - pink/black OR blue/white**

**XX LARGE - blue/white**

.....



# Officers and E Board 2023

## President

Walter Schell

## Vice President

Sara Ostrander

## Secretary

Melissa Claire Prario

## Treasurer

Dr. Robert Chasen

## Asst. Treasurer

Larry Ryan

## E Board

Dan Ryan      Ania Dobrolinska

Tom Carter    Alynne MacLean

Steve Kimball   Suzanne Wall

\*\*\*\*\*



## **Southeastern Massachusetts Mineral Club**



**Memberships are Due in August!**

**\$20.00 per Family per year Dues**

**\$15.00 per Single Person**

And for that money, you are a fully insured Club Member, access to a wealth of mineral knowledge, Club digs, are held at some of the best quarries in New England, 10 scheduled Meetings per Year, September to June where knowledge and information are exchanged freely. New members learn the What, Where, How and When. Come to the next meeting and see.

**Come Join Us and find out!**

**Scouting for new spots**

We are always looking for new areas to collect from. If you are sitting at home with nothing to do, log on and find out about the history of

mining in your area. Many old and abandon quarries and mines still exist throughout our region. Take a look and see what you can find. Send me any info you have and I will publish it so all Club Members will know.

Larry

## Membership Form

Dues are as follows:

**-Individual Membership \$15.00 Yearly Dues with e-mail newsletter-**

**-Family Membership \* \$20.00 Yearly Dues with e-mail newsletter-**

**\* Family Membership must list all family members as of September 1 of the membership year.**

**Return with your payment made out to SEMMC, Inc.**

Date\_\_\_\_\_

Name(s)\_\_\_\_\_

Children\_\_\_\_\_

\_\_\_\_\_

Address\_\_\_\_\_

City\_\_\_\_\_ State\_\_\_\_\_

Zip code\_\_\_\_\_

Phone(s)\_\_\_\_\_

Email address\_\_\_\_\_

**Southeastern Massachusetts Mineral Club**

**PO Box 228**

**E Bridgewater MA 02333-0228**



Paul Monti a past President of our Club, receives his son Jarred's Medal of Honor from USA President Barack Obama. We dedicated our Auction to them!