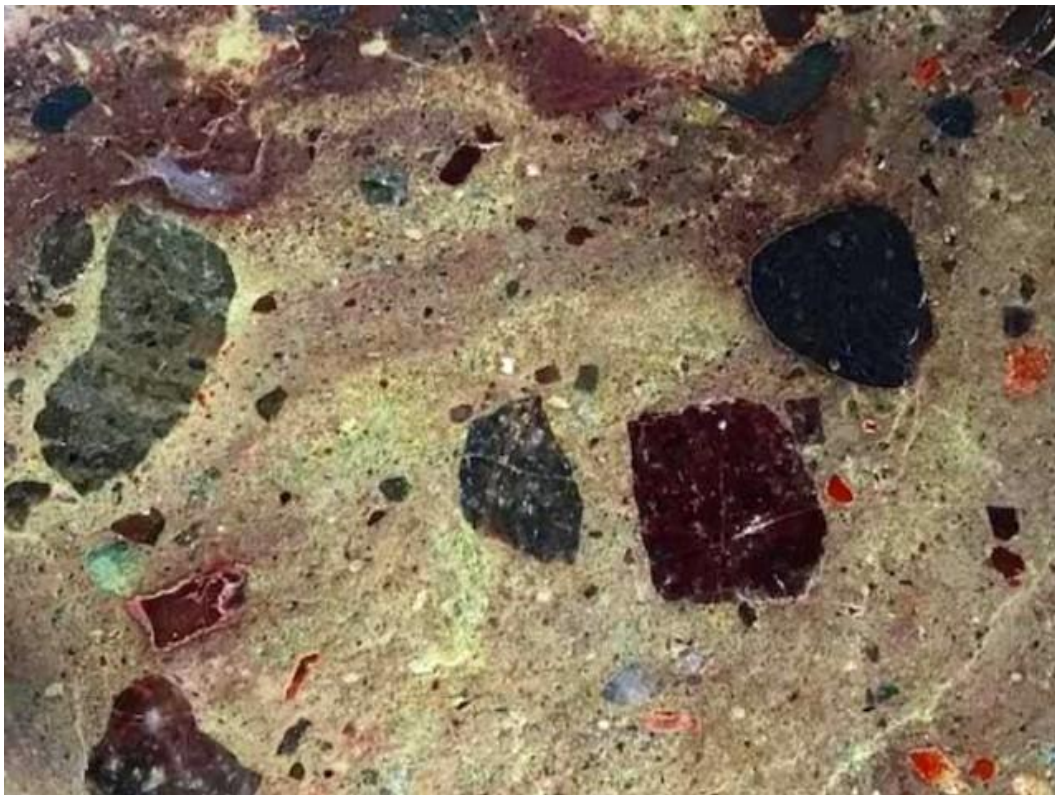


SE Massachusetts Mineral Club



January 2022



OutCroppings

January 2022

www.semmc.com

Incorporated April 8, 1970

Meetings held on the second Thursday of each month at 7:30pm
(excluding July and August)

Meetings are held at the Rockland Eagles Hall
29 Park Street, Rockland, MA 02370

Happy New Year

January Meeting 01/13/2022

President: Walter Schell wschell1191@gmail.com

Vice President: Steve Kimbal steve@kimbalpainting.com

Secretary: Sara Ostrander naturespeaks2you@gmail.com

Treasurer: Dr. Robert Chasen drchasen@comcast.net

Newsletter Editor: Larry Ryan zone859@verizon.net



A Message from President Walter Schell

Happy holidays all,

Walter

A Message from the Editor

Greetings! Hopefully everyone had a good holiday season, and came thru in good health. The new year brings hope to all of us that search the earth for it's treasures.

The **January Meeting** will host the **Holiday Party** that was postponed from last meeting due to many unforeseen issues. The Club would like to see many members there. Come down and talk shop! See you there!

Minerals are Everywhere!

Larry

[SEMMC Facebook Page](#)

Keep in touch with our Facebook Page to get the sudden additions to the digging schedule!

Field Trip Agenda

Field collecting trips are open to SEMMC members only, as our insurance policy covers members only. Please bring your SEMMC Membership card with you.

All participants of field trips are required to contact trip leaders at least 48 hours in advance of trip date.

Schedules may change. Please contact the host to confirm date, time and details.

Some trips may be eliminated, added, or altered depending on weather and other circumstances.

However, please remember we do have a club claim in Fonda, NY and it is open year-round, weather permitting.

The Club Rules for our claim can be found on the website.

Mineral of the Month

Copper



By Native_Copper_Macro_Digon3.jpg: "Jonathan Zander (Digon3)""derivative work: Materialscientist (talk) - Native_Copper_Macro_Digon3.jpg, CC BY-SA 3.0, <https://commons.wikimedia.org/w/index.php?curid=7223304>

Copper has been mined and used by mankind for many thousands of years. It is found in a usable metallic form around the world, and it's malleability made it easy to turn into tools and weapons and jewelry. There have been copper sheets with the writings of the ancient Sumerians found in caves, in Iran. Once our ancestors learned how to smelt metals, copper became the catalyst to the Bronze Age. There are copper mines and quarries found on Isle Royal in Lake Superior that date to 4000 years ago. Many opinions have been expressed as to who dug these pits. The list includes the Phoenicians, which would predate Columbus' claim of discovery of North America. **YouTube** has various videos on this subject which members may find interesting.

As for rock and mineral collectors, a natural piece of copper ore is mandatory for the collection. Many other minerals owe their beauty to the copper within. Azurite, malachite, turquoise, just to name a few. Copper's ability to conduct heat and electricity makes it invaluable to industries around the world! Many copper roofs can be found on older buildings around and in the older cities of the east. Look for the green verdigris or patina which is how copper oxidizes. Best of all, we need copper to live. In humans, we find it in our bones, muscles and liver.

[Malachite](#)



By JJ Harrison (<https://www.jjharrison.com.au/>) - Own work, CC BY-SA 3.0, <https://commons.wikimedia.org/w/index.php?curid=7515677>

Malachite often results from the supergene weathering and oxidation of primary sulfidic copper ores, and is often found with azurite

($\text{Cu}_3(\text{CO}_3)_2(\text{OH})_2$), goethite, and calcite. Except for its vibrant green color, the properties of malachite are similar to those of azurite and aggregates of the two minerals occur frequently. Malachite is more common than azurite and is typically associated with copper deposits around limestones, the source of the carbonate.



[Azurite](#)

By JJ Harrison (<https://www.jjharrison.com.au/>) - Own work, CC BY-SA 3.0, <https://commons.wikimedia.org/w/index.php?curid=7515671>

Large quantities of **malachite** have been mined in the Urals, Russia. It is found worldwide including in the Democratic Republic of the Congo; Gabon; Zambia; Tsumeb, Namibia; Mexico; Broken Hill, New South Wales; Burra, South Australia; Lyon, France; Timna Valley, Israel; and the Southwestern United States, most notably in Arizona.

Rock collectors and jeweler's around the world gather it for it's sheer beauty.

When traveling around the country

And you want a place to prospect,

Go to

www.mindat.org

Member's Corner

Welcome New Members!



Come and Join us!

Hello to all the new members of OUR CLUB! Make sure you attend the monthly meetings. There are stories to be told, information to be gathered, raffles to be won, guest speakers, What we dig, Where we

dig and How we dig are all discussed with our senior members. Be there!

Shirts are in!



So your choices are...

SMALL - pink with black ink OR orange with black ink

MEDIUM - pink/black OR blue/white;

LARGE - pink/black OR blue/black

X LARGE - pink/black OR blue/white

XX LARGE - blue/white

The **November Meeting** was a another good time. There was an abundance of quality raffle prizes, and as usual Diamond Bob did a great job! President Walter Schell called the meeting to order and the Secretaries report was read and accepted as was Treasurer's report. The scholarship Award was discussed as how it is to be presented and to Whom. Walter is looking into that for the Club. The Rockland Eagles has been booked thru June 2022, or until Bridgewater State allows us to return there. The December Meeting is also the Holiday Party for the Club and the Committee is working hard to make it a success.

Meetings last about 2 hours and the time flies by. See You **JAN 13, 2022**

I'll start in the purple section!

New Club E-Mail Address

southeastmmc@gmail.com

[SEMMC FACEBOOK PAGE](#)

The December Meeting to be held December 9, 2021

Best of the Best!

Got a good picture of your best piece?

Show it off here!





**Tsavorite garnet with tanzanite and graphite. From
Tanzania.**

. Southeastern Massachusetts Mineral Club



Memberships run from August 1st to July 31

\$20.00 per Family per year Dues

And for that money, you are a fully insured Club Member, access to a wealth of mineral knowledge, Club digs, are held at some of the best quarries in New England, 10 scheduled Meetings per Year, September to June where knowledge and information are exchanged freely. New

members learn the What, Where, How and When. Come to the next meeting and see.

“Hey, someone gave me this “Rock”

What is it?



Come Join Us and find out!

Scouting for new spots

We are always looking for new areas to collect from. If you are sitting at home with nothing to do, log on and find out about the history of mining in your area. Many old and abandon quarries and mines still exist throughout our region. Also there are many “ancient” sites that hold evidence of the indigenous peoples that were living here and quite possibly Viking Settlements that were here before Columbus in 1492. Take a look and see what you can find. Send me any info you have and I will publish it so all Club Members will know.

Larry

[America's Stonehenge](#)

Happy New Year!

Membership Form

Your dues help keep us going. Dues pay for the newsletter, correspondence, refreshments, speakers, and a host of other expenses. Dues are as follows:

-Individual Membership \$15.00 Yearly Dues with e-mail newsletter-

-Family Membership * \$20.00 Yearly Dues with e-mail newsletter-

*** Family Membership must list all family members as of September 1 of the membership year.**

Tear off and return with your payment made out to SEMMC, Inc.

Date _____

Name(s) _____

Children _____

Address _____

City _____ **State** _____

Zip code _____

Phone(s) _____

Email address _____

Southeastern Massachusetts Mineral Club

PO Box 228

E Bridgewater MA 02333-0419